

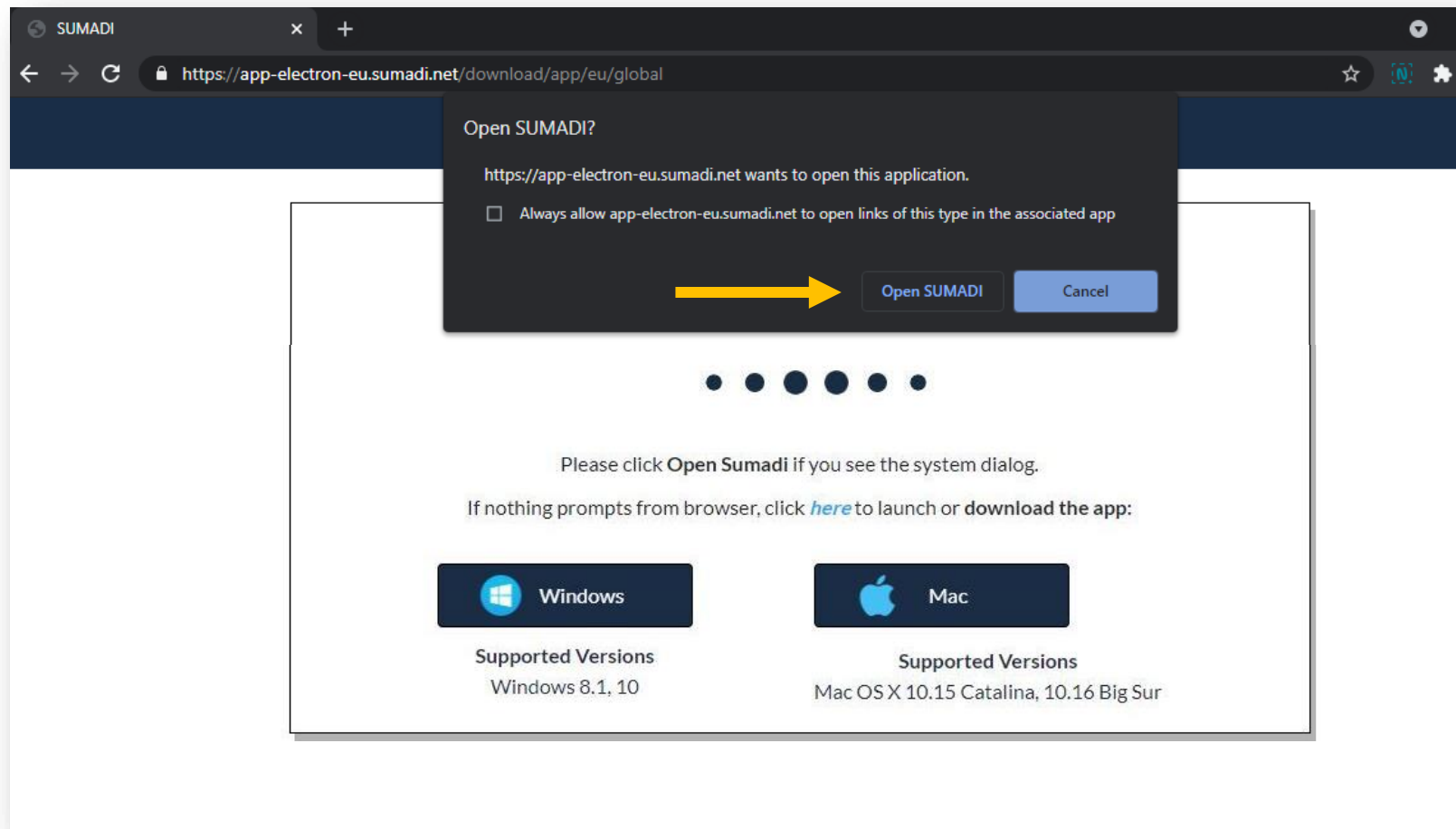
Update SUMADI version



If you do not have the required version of SUMADI™, or it has not been automatically updated to the latest version, follow these steps to update it:

- 1 Enter the link or URL provided by the team

- 2 Clic on the “Open SUMADI” button, displayed in the floating window.



- 3 SUMADI™ will automatically open updated to its latest version.



Note: If the previous steps do not update the version, go to the link again, and press the option corresponding to your operating system to download and install the application again.

