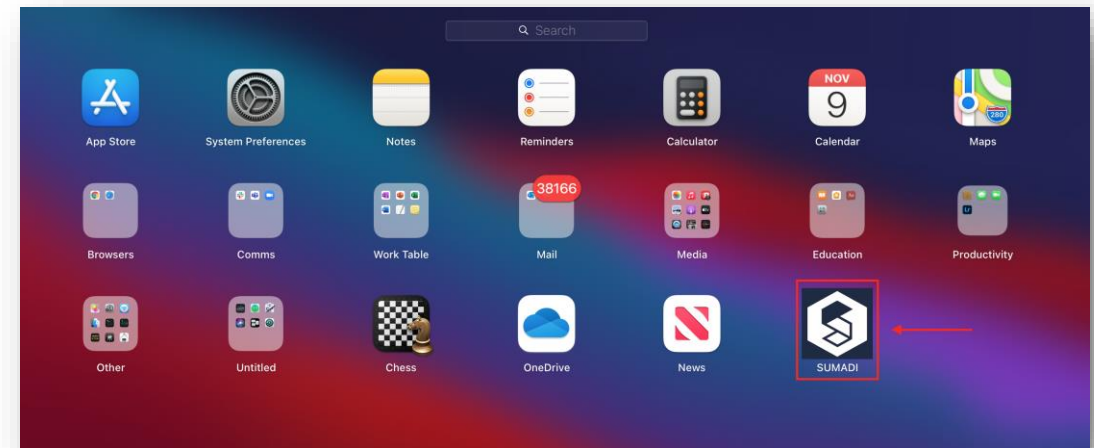
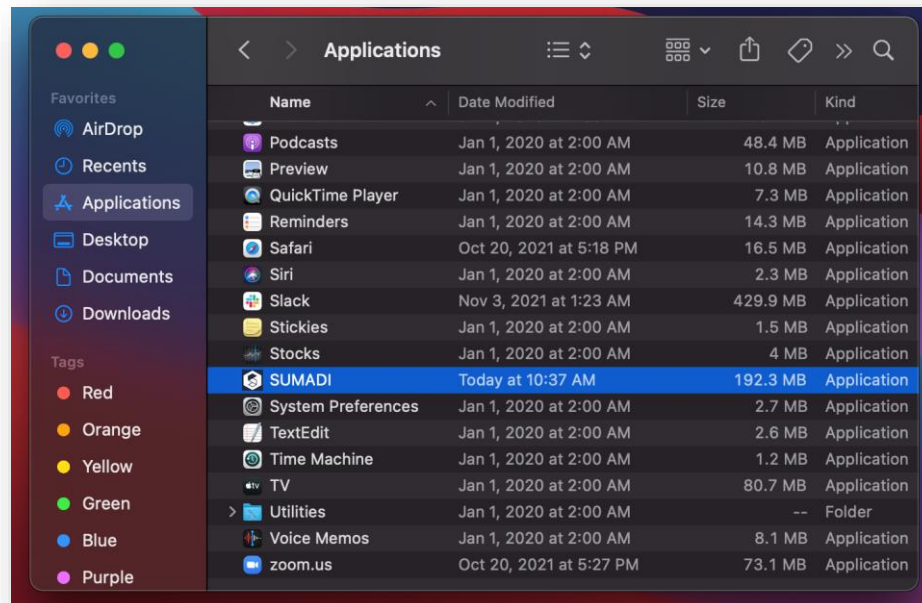


How to access to your exam using SUMADI - Mac OS



- 1 Click on the SUMADI™ icon that will appear from the “*Applications*” folder or through the shortcut created in the “*Launchpad*” after installing the application.



- 2 If it is the first time opening SUMADI™ app, the home page will be displayed where you must enter your Institution ID. In addition, you will be able to configure the camera, language and microphone.

The screenshot shows the 'Welcome' screen of the SUMADI app. It features a white background with a dark blue header area. The title 'Welcome' is centered at the top in a bold, black font. Below the title, there are four configuration sections arranged in a 2x2 grid:

- INSTITUTION ID:** A text input field containing 'EDUSOFT02'.
- CAMERA:** A dropdown menu showing 'HP HD Camera (0408:54...'.
- LANGUAGE:** A dropdown menu showing 'English'.
- MICROPHONE:** A dropdown menu showing 'Microphone (Conexant)' and a green progress bar below it.

To the right of these settings is a video preview window showing a black screen with a white 'S' logo in the top left corner and a red recording indicator in the bottom left corner.

At the bottom of the screen, there is a purple notification box with the text: 'NOTE: When submitting any Setting the Sumadi program will restart and you will be required to login in again and start over.' Below this box are two buttons: 'CANCEL' (cyan) and 'SUBMIT' (blue).

Note: The Institution ID is provided by your center/institution.

Note: If it is **not** your first time entering SUMADI™ app, you can make these changes from the menu bar in the **File> Settings** section.


- 3 Once you have finished configuring, click on the “**Submit**” button.
- 4 SUMADI™ app will automatically restart to save the changes made and the login portal will appear on the screen, you must enter your username and password to log in.

Member Login

User Name	Type here
Password	Type here

[Forgot your password?](#)

Login

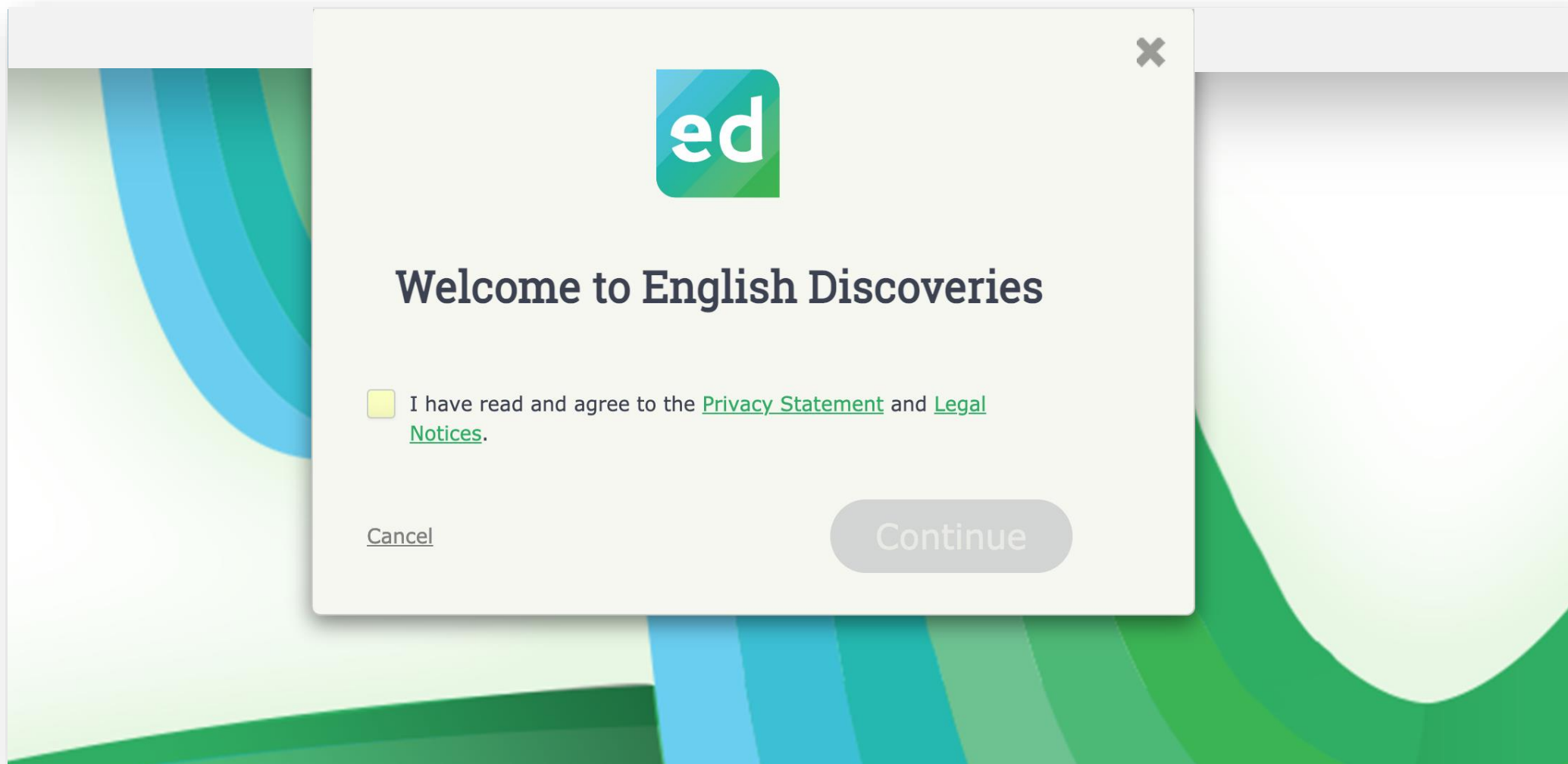
 A subsidiary of ETS,
the creator of the TOEFL®
and TOEIC® tests

Contact Us | Tell a Friend | About Edusoft | Legal Notices | Privacy Statement

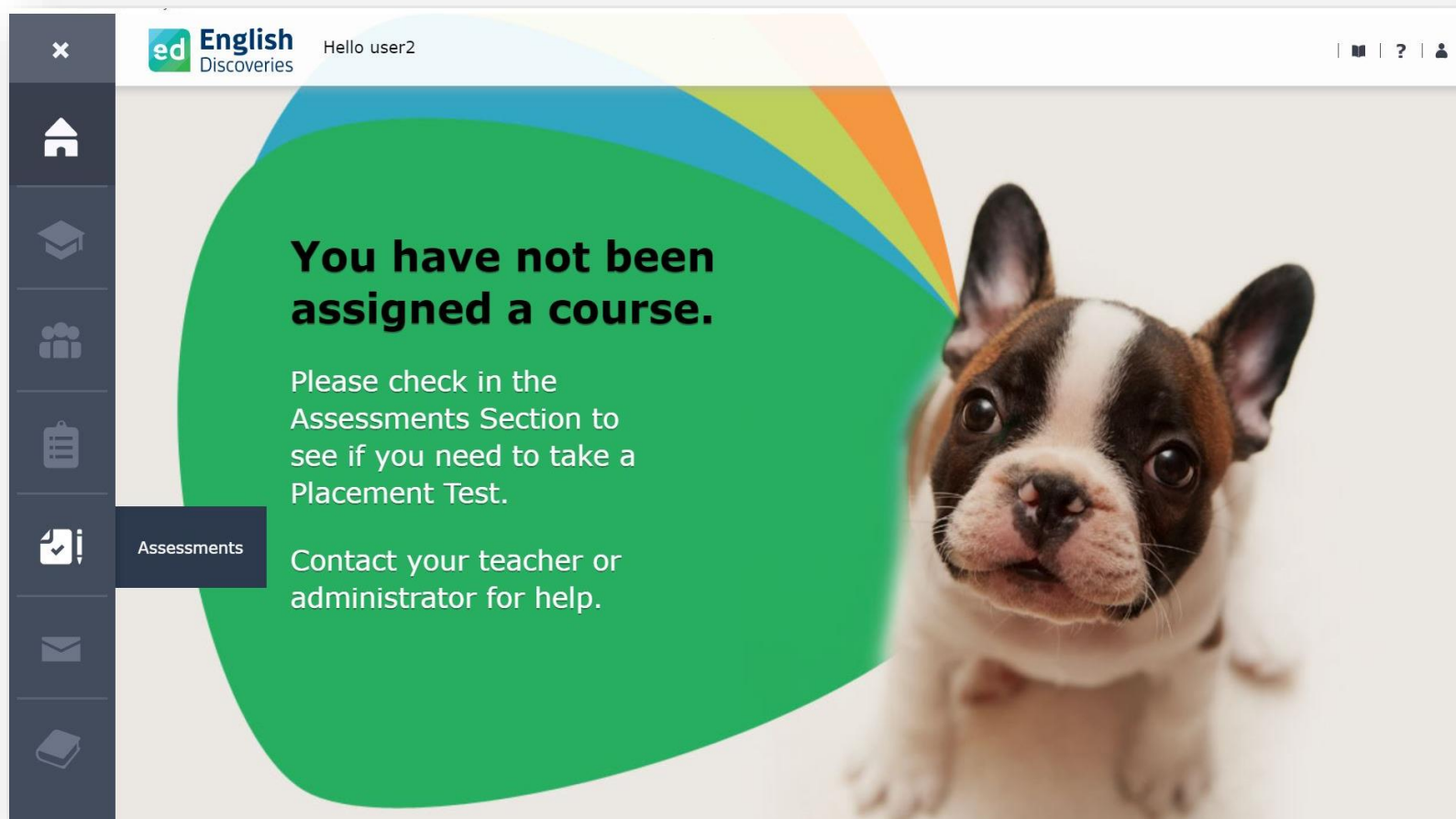
© 1990-2021 Edusoft LTD. All Rights Reserved.

Note: The username and password are provided by your institution.

- 5 When signing in, you must accept the terms and conditions of the English Discoveries portal in order to continue.



- 6 You will then be able to view the English Discoveries welcome page. To view available exams, go to the menu bar located on the left side of the page and click on the **“Assessments”** section.



7

In this section, you will be able to view the available exams and the remaining time to enter. To start, click on the **“Start Test”** button corresponding to the exam you want to take.

The screenshot shows a window titled "Assessments" with a close button in the top right corner. Below the title is a section for "Available Tests" with a count of 2 and an upward arrow. A table lists the tests with columns for "Name" and "Time Remaining".

Name	Time Remaining
1. Placement Test	
2. TOEIC® Listening and Reading test	01:18:52 HR MIN SEC

Below the table are three sections: "Upcoming Tests" with a count of 0, and "Test Results" with a count of 0. The "Start Test" button for the TOEIC test is highlighted with a red box.