

# Download and Install SUMADI App - Mac OS



## Installing SUMADI™ (MAC)

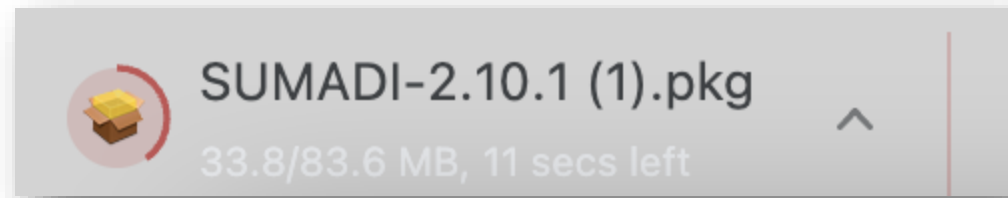
To download the **SUMADI™ App** and take your exam, you will need to use the **Google Chrome** browser.

- 1 Enter the URL link you received from your institution to download the SUMADI™ App using Google Chrome.

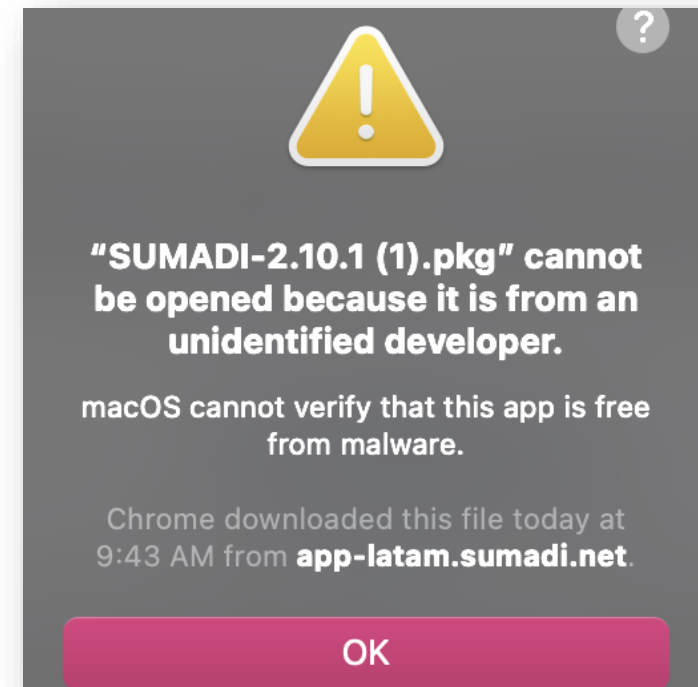
- 2 Click the “**Mac**” button to start the download.



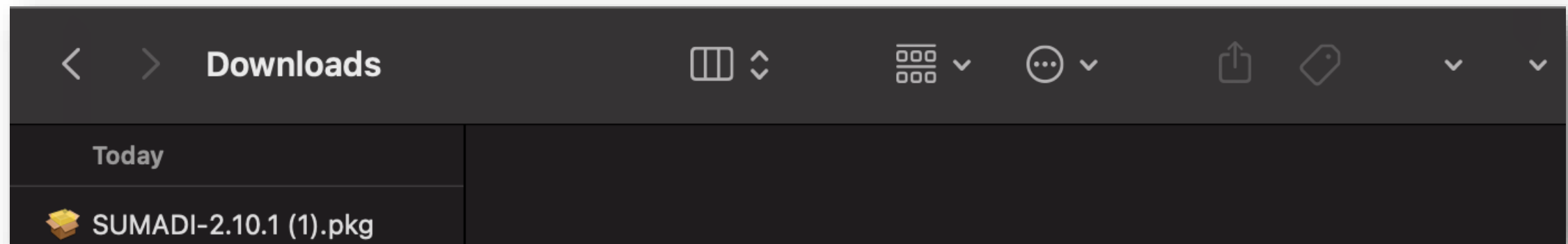
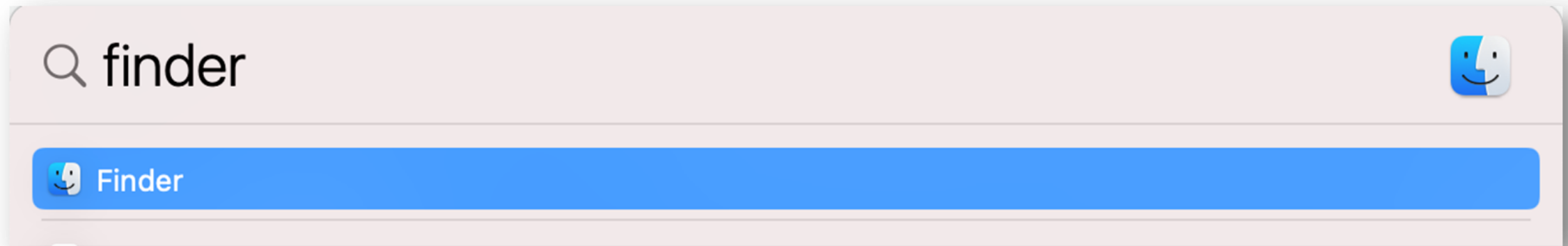
- 3 Once the download is complete, click the more options arrow from the download file located in the lower-left corner of your screen and choose the “**Open**” option.



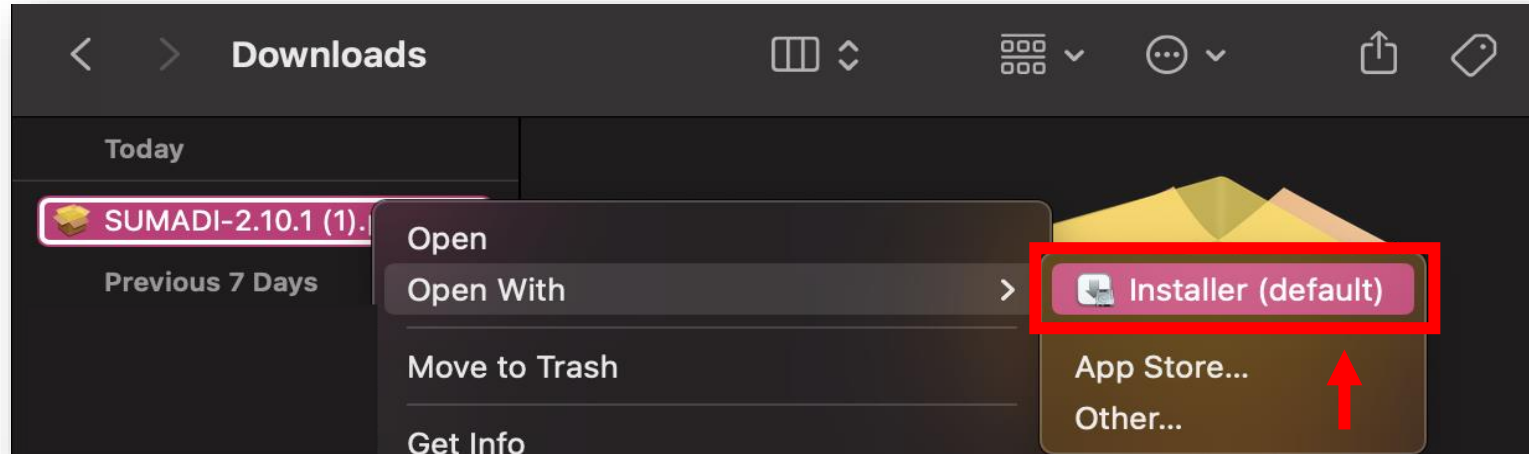
- 4 The following window may be displayed once the downloaded installer opens:



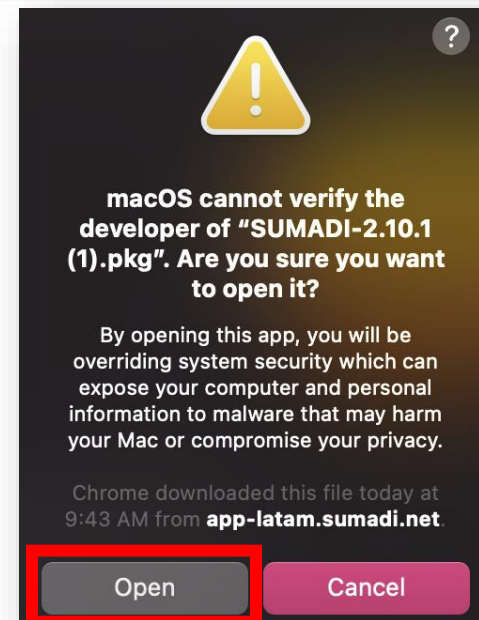
- 5 This means that the app requires authorization to install. To authorize the download, go to the “**Finder**” on your Mac and then go to the “**Downloads**” folder.



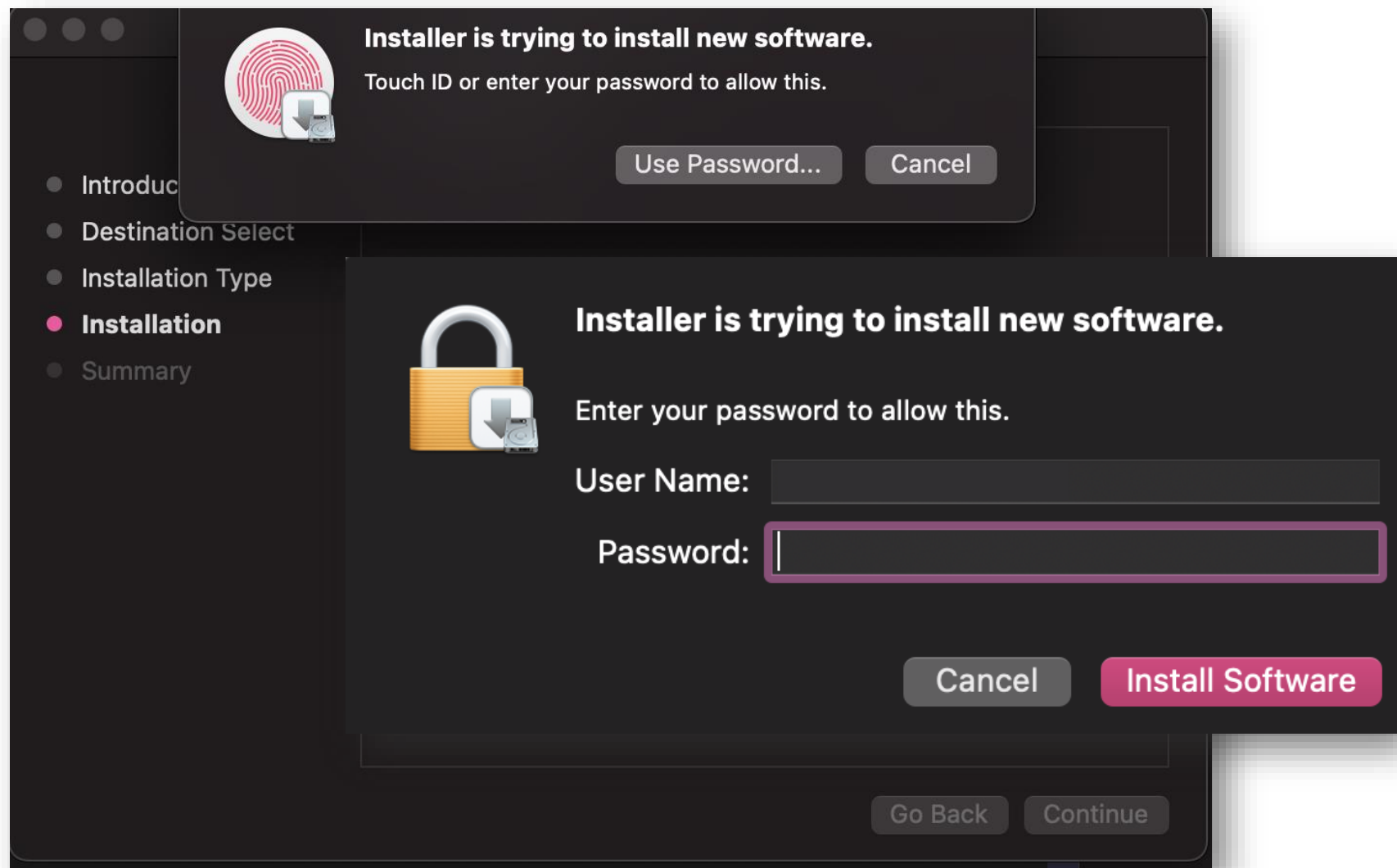
- 6 Double click on the downloaded SUMADI™ installer and select the option “**Open with: Installer**”.



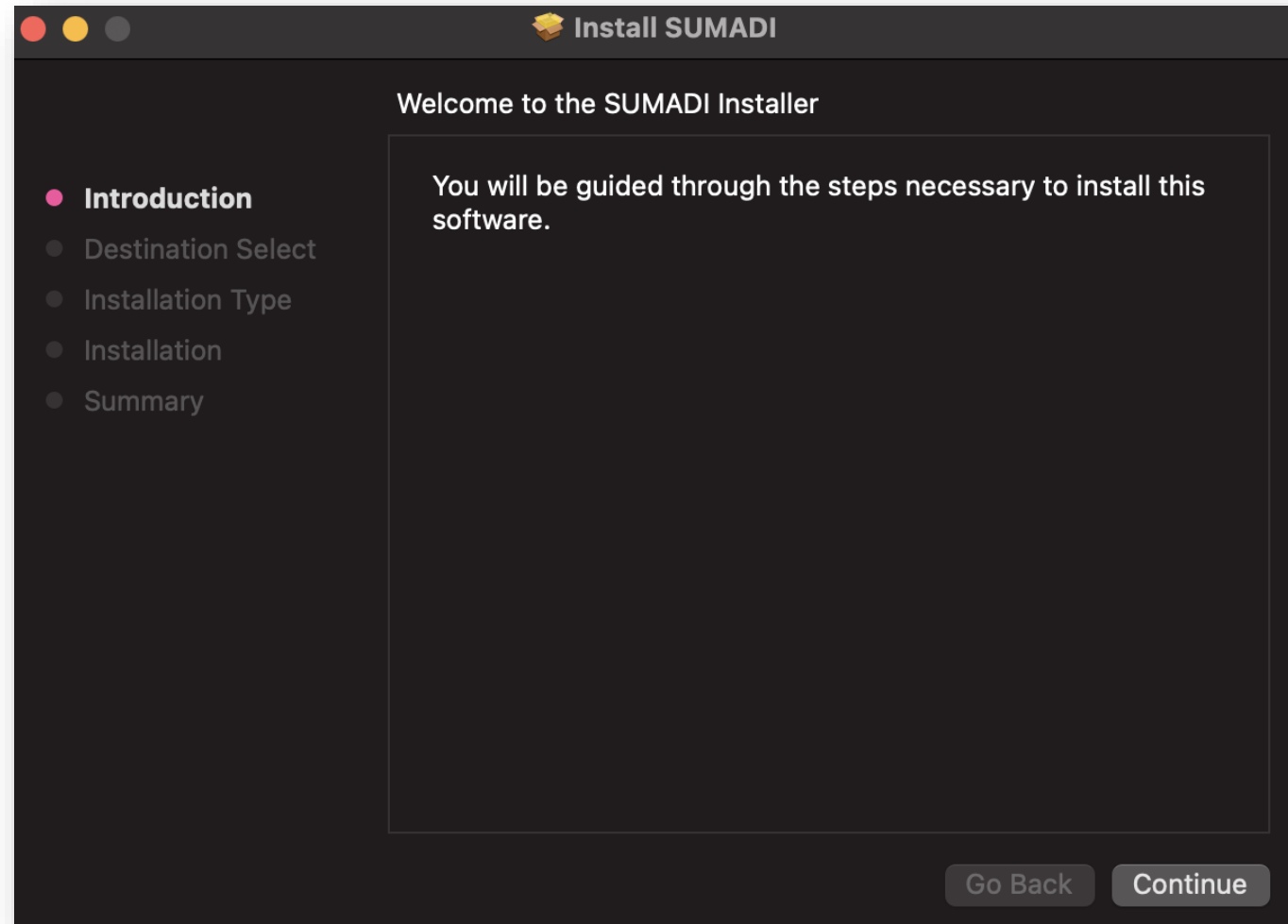
- 7 Once clicking the “**Installer**” option, once again the following window may be displayed, press the “**Open**” button:



- 8 The installer will open and ask for the computer's administrator credentials to perform the installation.

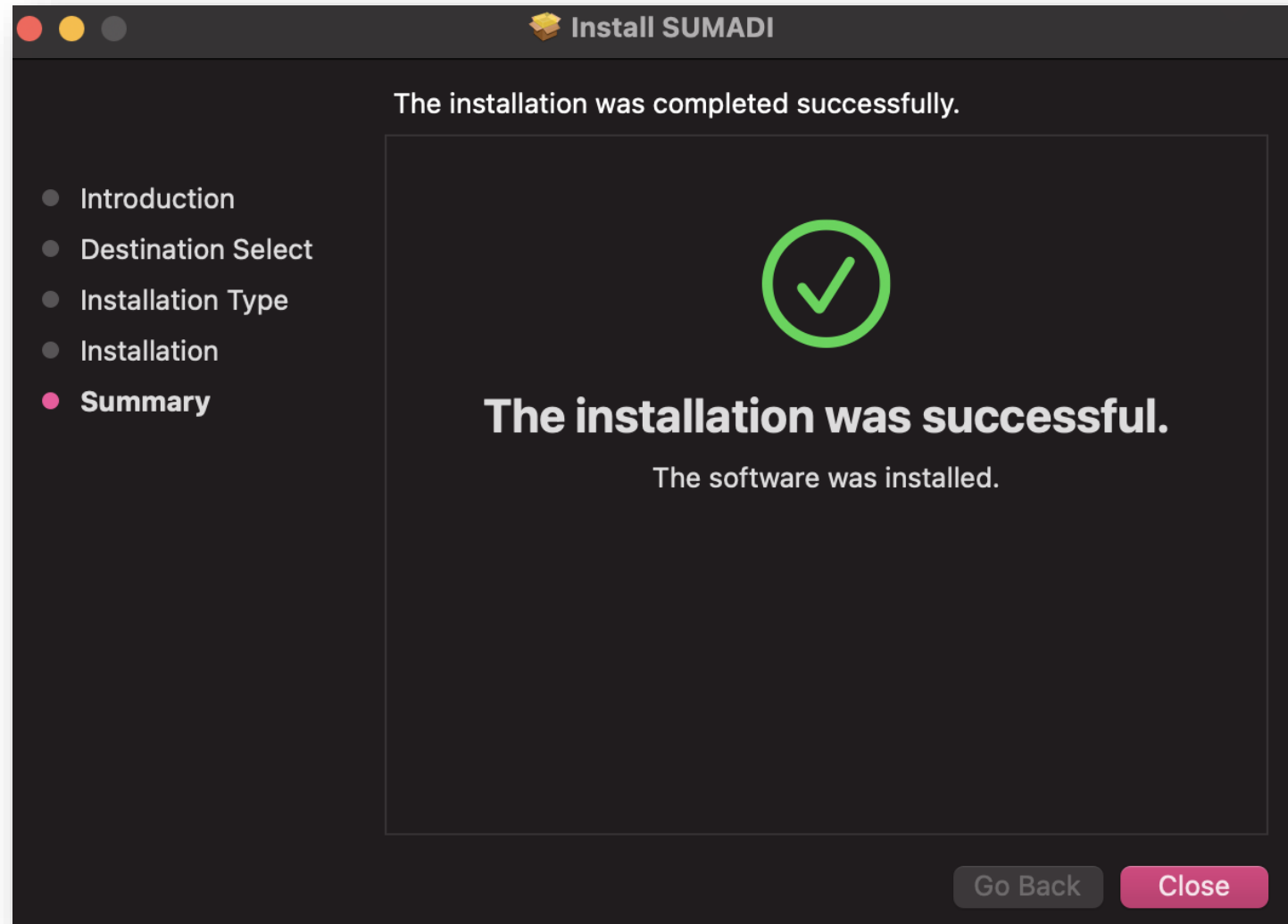


- 9 Enter your administrator credentials and then the SUMADI™ installer will open. Go through the steps of the installer to be able to add SUMADI™ to your computer.



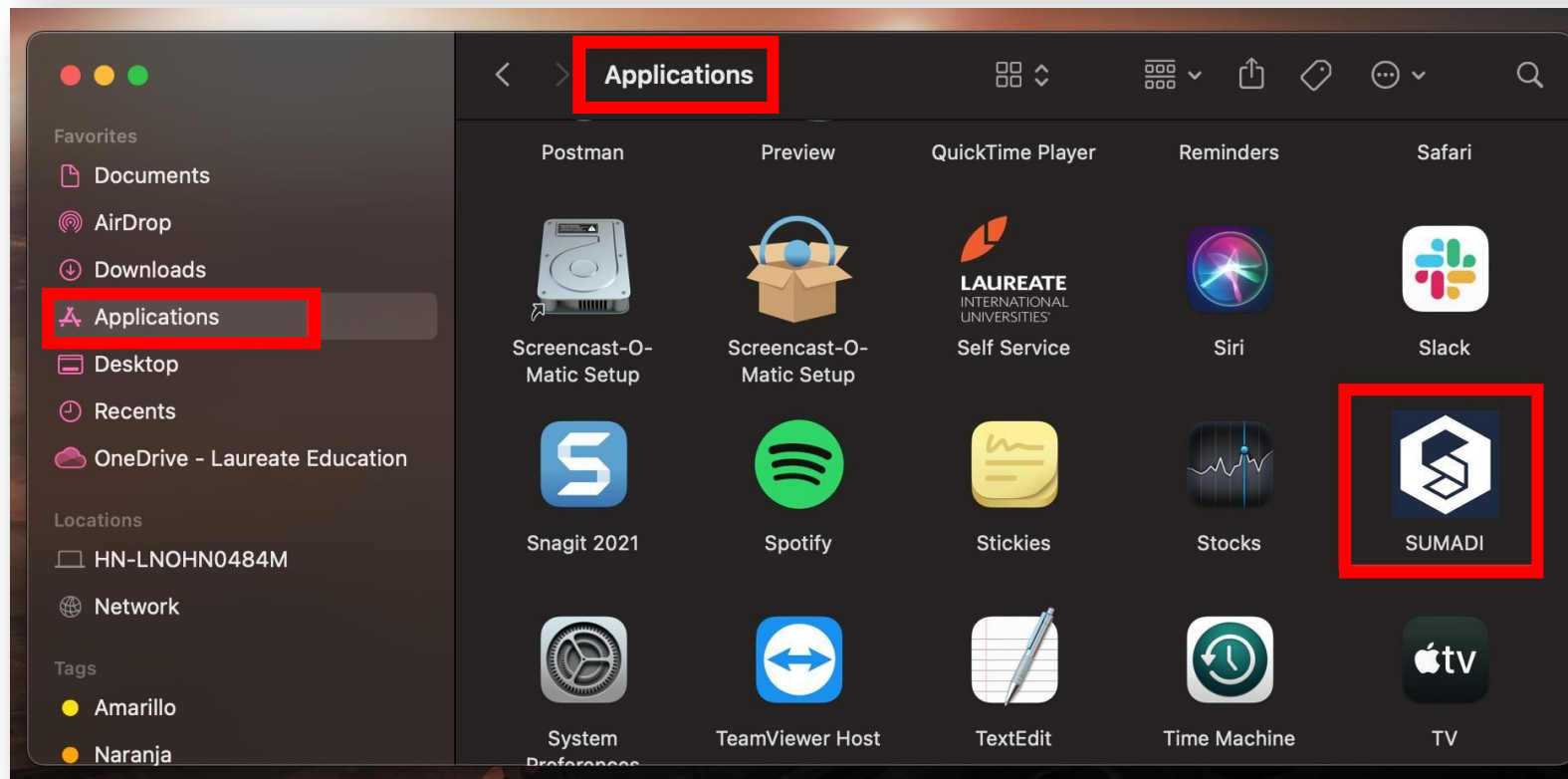
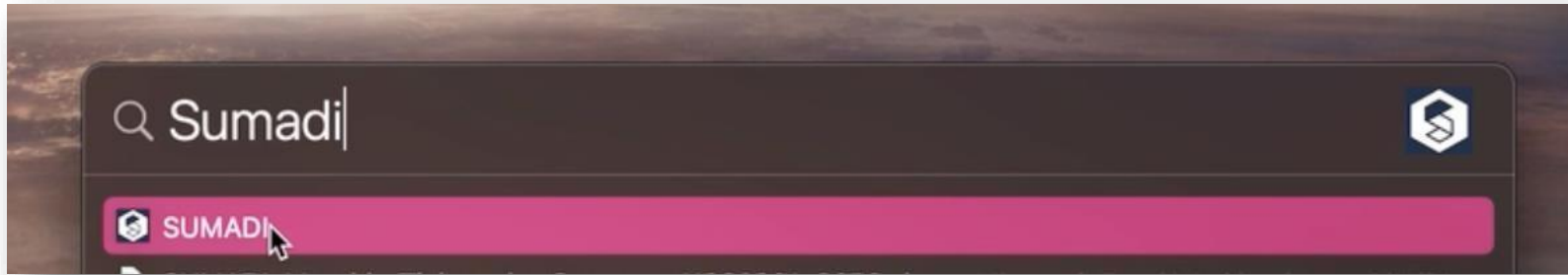
10

Once the installation is completed, you will see the following confirmation message.



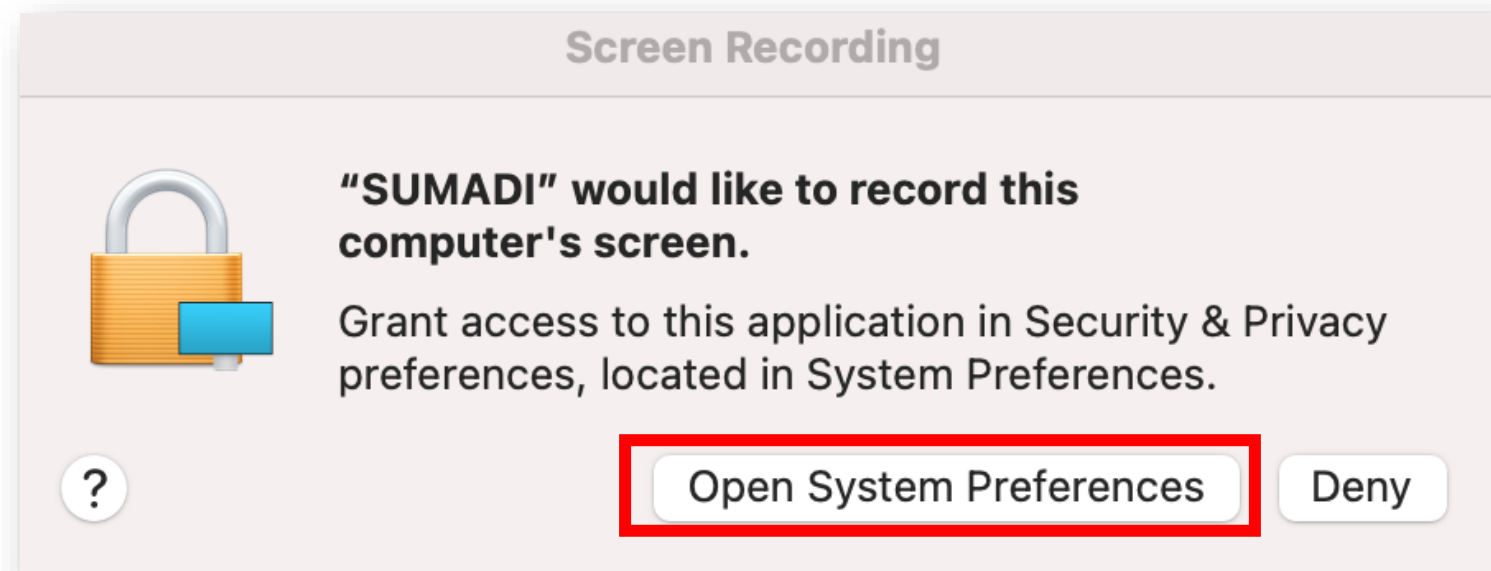
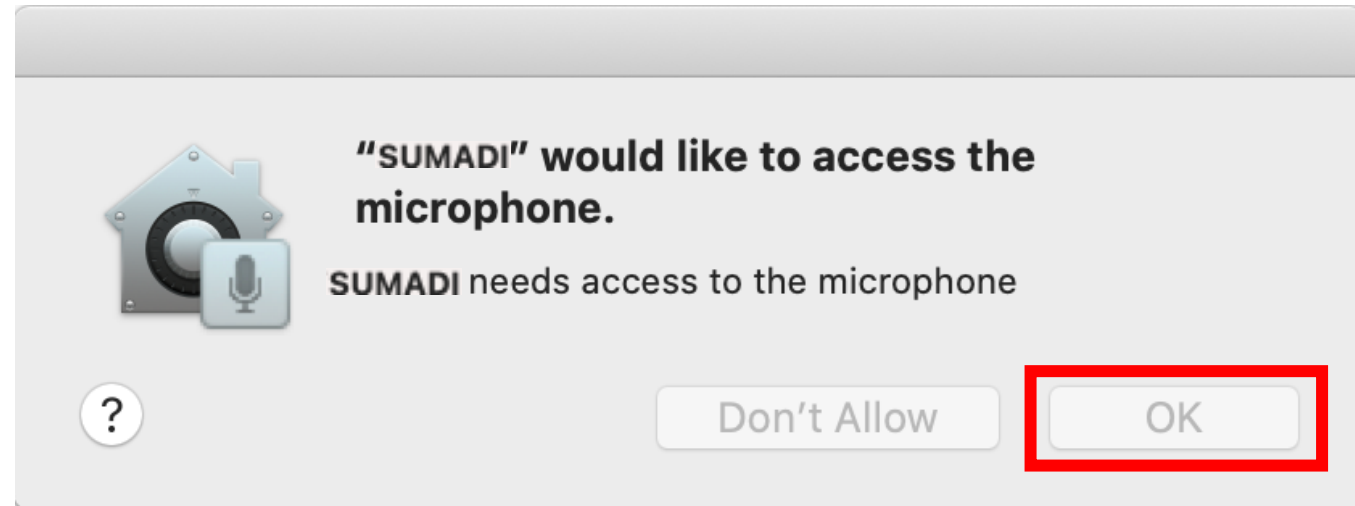


11 You can now access SUMADI™ from your “Applications” folder.



12

When entering SUMADI™ you will need to allow the application to access your microphone and allow it to record your screen.



**Note:** This process is necessary if you are installing SUMADI™ for the first time. If there is an app update, it will be downloaded automatically when you open the app in your computer.

When opening SUMADI™, always check the version of the app you are using. If there is a new version, SUMADI™ will indicate that it is updating and downloading the latest version automatically.

It is important to remember that the App update only happens until you open SUMADI™.

**Note:** Make sure to close all apps running in the background process.